

Pacific Scribes Card Making

October 8, 2023



GENERAL SUPPLY LIST For all 3 cards

- PENCIL
- RULER
- SCISSORS
- X-ACTO KNIFE WITH NEW SHARP BLADE
(and band aids for those little accidents)
- DOUBLE SIDED TAPE
- LOW TACK TAPE
- GLUE
- TRACING PAPER
- SMALL PIECE OF SARAL TRANSFER PAPER FOR TRACING THE STENCIL - or if you can draw can make your own image for a stencil
- SCORING TOOL or BONE FOLDER
- EMBOSSING STYLUS - for embossing
- LIGHT TABLE OR WINDOW WILL DO (if you are confident that pressing on it won't break it)
- CUTTING MAT

PAPER

For JoAnn's embossing

Sturdy paper for stencil (manilla folder is great for this if you have an old one)

Paper for embossing preferably 140 lbs (300 gms) and smooth

For Judith's Christmas tree cards

One sheet that is at least 8.5" x 11"

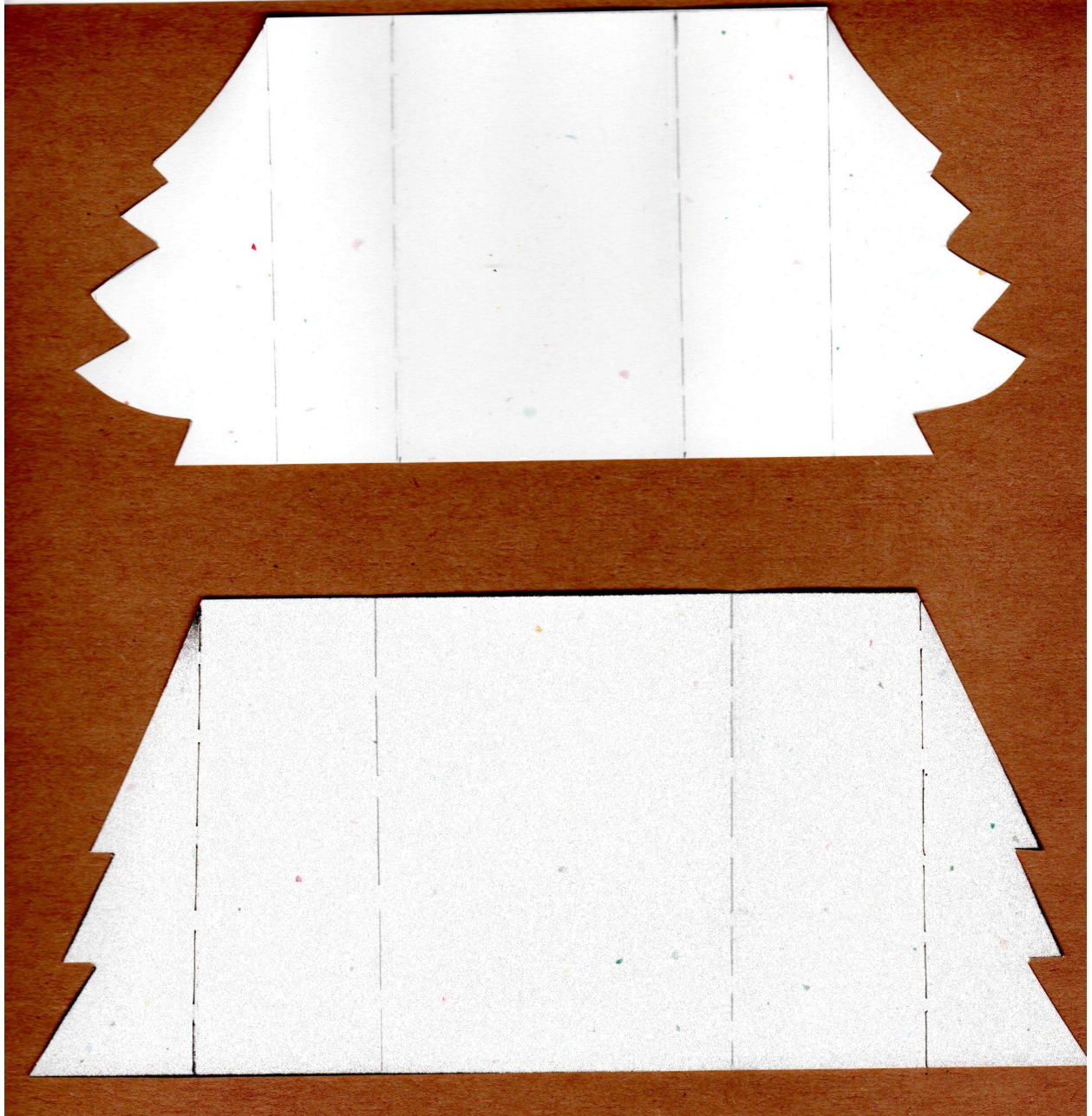
One sheet of 12" x 12" double sided makes for a more interesting card

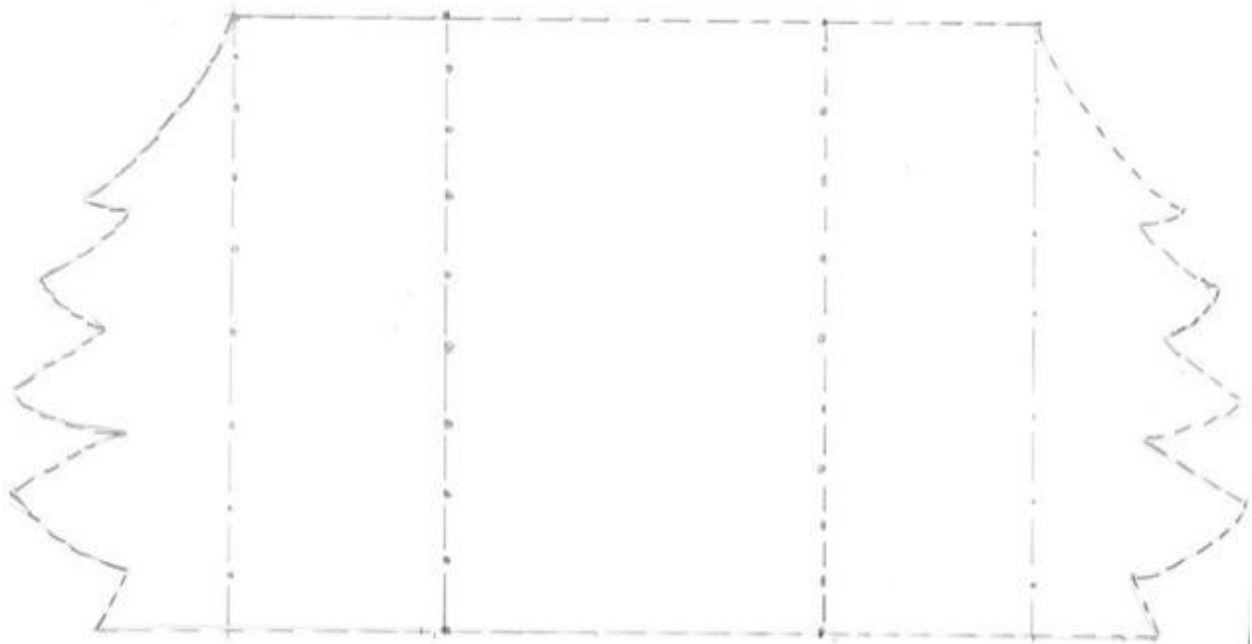
For Dawns Tower Pinwheel card

For the tower - 1 piece - photocopy grade will do - size 4.5" x 4.5"

For the body of the card - 4 pieces of card stock - size 4.5" x 3"

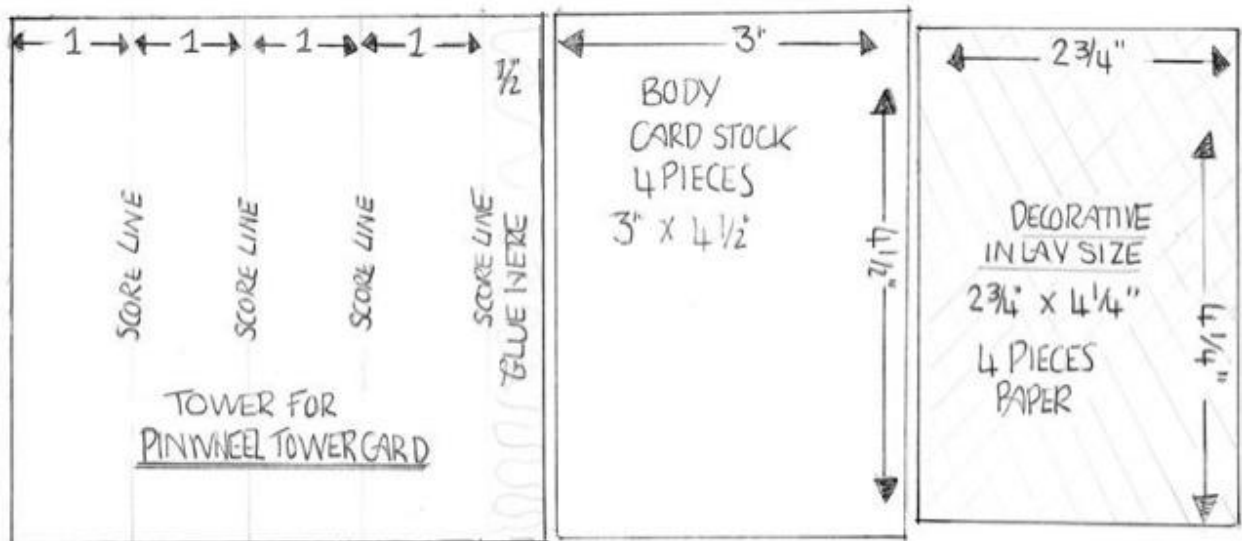
For the inlay of the card - 4 pieces of pattern paper 4.25" x 2.75" this is an optional step (but will be used for the demonstration on the day)





..... SCORE
----- CUT

USE THIS COPY
CUT AROUND OUT SIDE
SCORE IN THE MIDDLE



THIS TOWER PINWHEEL CARD FITS AN ALL 4 X 6 ENVELOPE